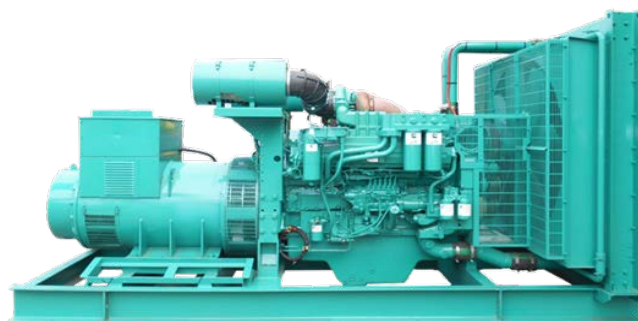


CUMMINS SERIES G-DRIVE DIESEL ENGINE



Technical Data

50HZ , 1500RPM , PF:0.8

MODEL	ENGINE TYPE	NUMBER OF CYLINDERS	50HZ 380 VOLTS				STANDARD DIMENSIONS			
			PRIME		STANDBY		L	W	H	WEIGHT
			KVA	KW	KVA	KW	MM	MM	MM	KG
PE36C	4BT3.9-G2	L 4	40	32	45	36	2100	750	1200	894
PE58C	4BTA3.9-G2	L 4	65	52	73	58	2150	750	1200	919
PE70C	4BTA3.9-G11	L 6	79	63	88	70	2250	750	1300	1030
PE95C	6BT5.9-G2	L 6	106	85	119	95	2250	775	1300	1208
PE106C	6BTA5.9-G2	L 6	119	95	133	106	2400	800	1300	1300
PE120C	6BTAA5.9-G2	L 6	135	108	150	120	2400	800	1300	1523
PE163C	6CTA8.3-G2	L 6	185	148	204	163	2700	900	1300	1523
PE183C	6CTAA8.3-G2	L 6	204	163	229	183	3000	900	1400	1650
PE220C	6LTAA8.9-G2	L 6	250	200	275	220	3000	1100	1750	1920
PE250C	6LTAA8.9-G3	L 6	275	220	313	250	3000	1100	1750	2100
PE280C	NTA855-G2	L 6	313	250	350	280	3400	1100	1795	3393
PE310C	NTA855-G2A	L 6	350	280	388	310	3400	1100	1795	3393
PE312C	NTA855-G4	L 6	350	280	390	312	3400	1100	1795	3393
PE330C	NTAA855-G7	L 6	375	300	413	330	3400	1100	1795	3393
PE450C	QXS15-G8	L 6	500	400	563	450	3700	1460	1940	4600
PE400C	KTA19-G3	L 6	450	360	500	400	3700	1320	1930	4672
PE450C	KTA19-G4	L 6	500	400	563	450	3700	1320	1930	4672
PE520C	KTAA19-G6	L 6	600	480	650	520	3700	1320	1930	4672
PE550C	KTAA19-G7	L 6	625	500	688	550	3700	1320	1930	4672
PE560C	VTA28-G5	V 12	640	512	700	560	4000	1580	2200	6454
PE670C	QSK23-G2	L 6	748	598	838	670	4250	1700	2200	6650
PE715C	QSK23-G3	L 6	801	641	894	715	4250	1700	2200	6650
PE833C	QST30-G3	V 12	939	751	1041	833	4400	1800	2260	7200
PE880C	QST30-G4	V 12	1000	800	1100	880	4400	1800	2260	7300
PE800C	KTA38-G2A	V 12	900	720	1000	800	4400	2080	2350	8100
PE906C	KTA38-G5	V 12	1029	823	1133	906	4400	2080	2350	8300
PE1120C	KTA50-G3	V 16	1256	1005	1400	1120	5100	2100	2420	10500
PE1340C	KTA50-G8	V 16	1406	1125	1675	1340	5800	2280	2460	11000
PE1340C	KTA50-GS8	V 16	1475	1180	1675	1340	5800	2280	2460	11000
PE1600C	KTA50-G16	V 16	1875	1500	2000	1600	5800	2280	2460	14000
PE1500C	QSK60-G2	V 16	1688	1350	1875	1500	5800	2280	2600	14580
PE1650C	QSK60-G3	V 16	1875	1500	2063	1650	5800	2280	2600	14580
PE1800C	QSK60-G4	V 16	2000	1600	2250	1800	5900	2280	2700	16500
PE2000C	QSK60-G8	V 16	2250	1800	2500	2000	6000	2280	2700	16800
PE2400C	QSK78-G9	V 16	2750	2200	3000	2400	7300	3000	3000	23000

* 本型錄僅供參考，規格、外觀、顏色依實際簽約規定之機型為準。